

SIMPO HV

Inverter Settings

_V1.0(EN)

ZYC ENERGY
ZERO YOUR CARBON

Version: V1.0
Released Date: 2024-10-22



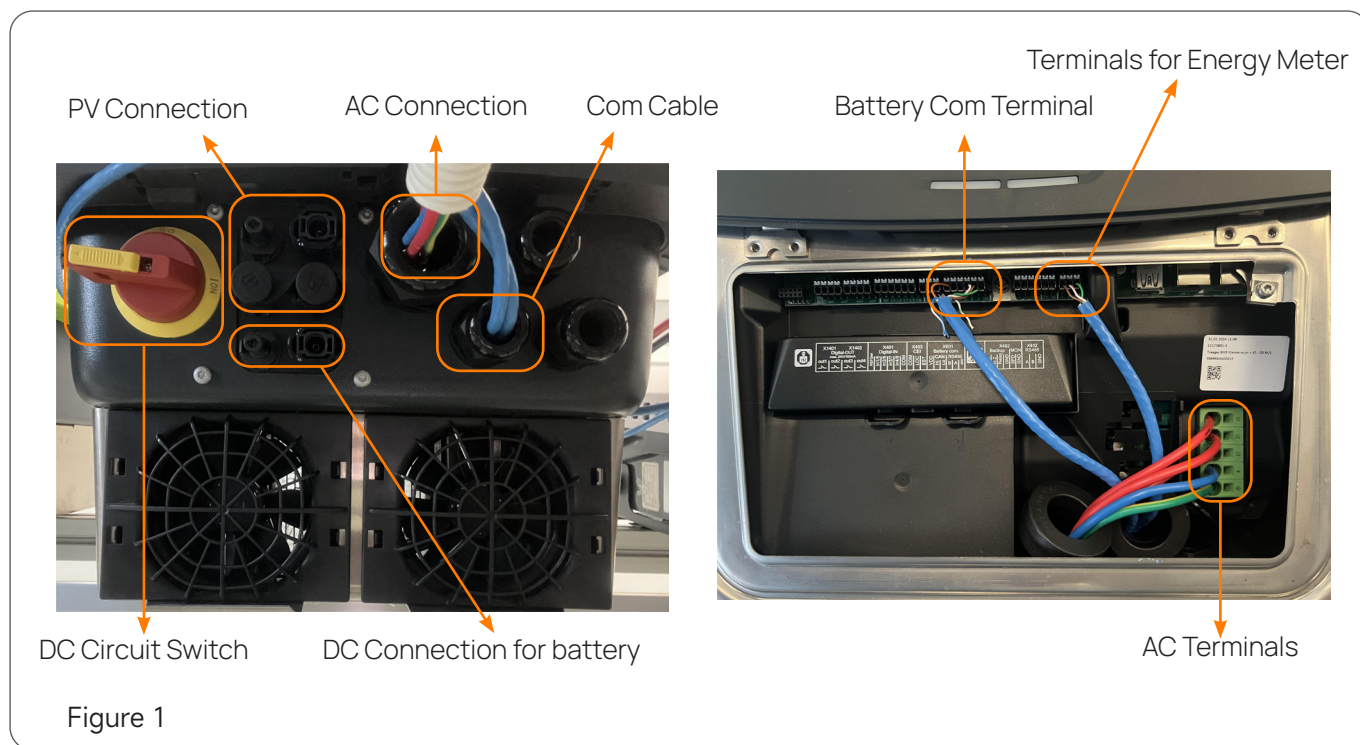
Kostal Inverter

Commissioning Process

Step 1: Connect power cables and communication cable

Please refer to the SIMPO HV Quick Start manual for SIMPO HV power cables and communication cable connections. And follow the Operating Manual of Kostal inverter for power cables crimping and cables connections.

The following is an example of connection between SIMPO HV and Kostal Plenticore G3.



Step 2: System start up

Inverter Side:

1. Switch on the DC Circuit Switch as Figure 1.1
2. Turn on the DC breaker between battery and inverter (if any).

Battery Side:

3. Turn on the Air Switch.
4. Press 'ON/OFF' to start the system.
5. Check the function status of the HMI:

Only the 'Set On' LED on master is ON. Only the 'Last Unit' LED of last tower is ON. Only the 'WIFI On' on master tower is on.

6. Press and hold the 'Black Start' button for 3s to power up the inverter(for off-grid system)

Step 3: Kostal Portal Settings

Kostal inverter automatically recognises ZYC batteries and makes the relevant settings. Please configure other settings according to practical scenarios and local laws.

Solis Inverter

Commissioning Process

Step 1: Connect power cables and communication cable

Please refer to the SIMPO HV Quick Start manual for SIMPO HV power cables and communication cable connections. And follow the Operating Manual of Solis inverter for power cables crimping and cables connections.

The following is an example of connection between SIMPO HV and Kostal Plenticore G3.

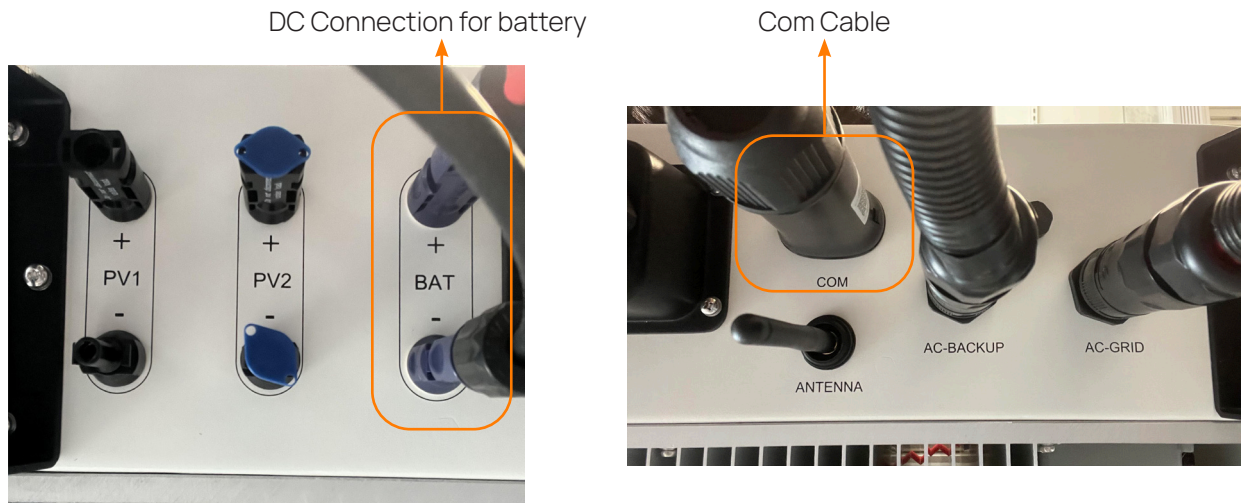


Figure 2

Step 2: System start up

Inverter Side:

1. Switch on the inverter
2. Turn on the DC breaker between battery and inverter (if any).

Battery Side:

3. Turn on the Air Switch.
4. Press 'ON/OFF' to start the system.
5. Check the function status of the HMI:



Figure 3

Only the 'Set On' LED on master is ON. Only the 'Last Unit' LED of last tower is ON. Only the 'WIFI On' on master tower is on.

6. Press and hold the 'Black Start' button for 3s to power up the inverter(for off-grid system)

Step 3: Solis Cloud Settings

1. Start the APP 'Solis Cloud', and click 'more tools' on the bottom right.
2. Select 'Local Operation'.
3. Select 'Connect with Bluetooth' and find the inverter with name of 'INV_xxxxxxxxx', then log in.
4. Click 'Settings' after entering the interface and see all the settings.

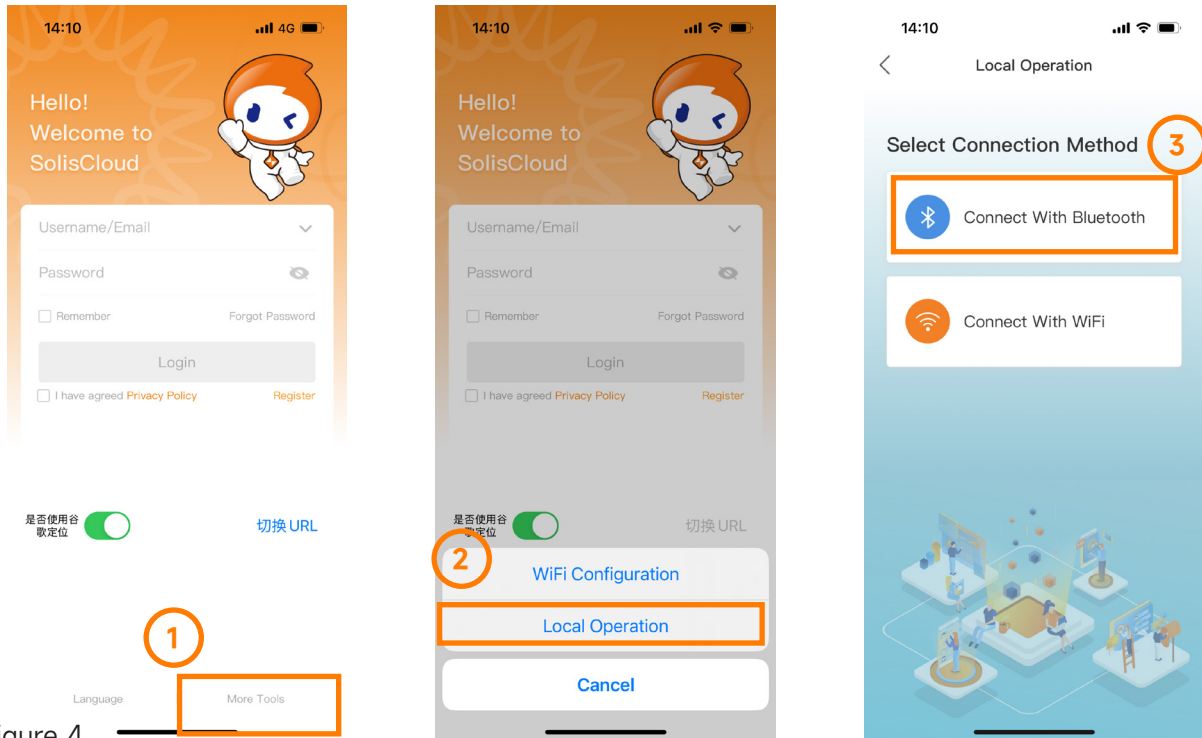


Figure 4

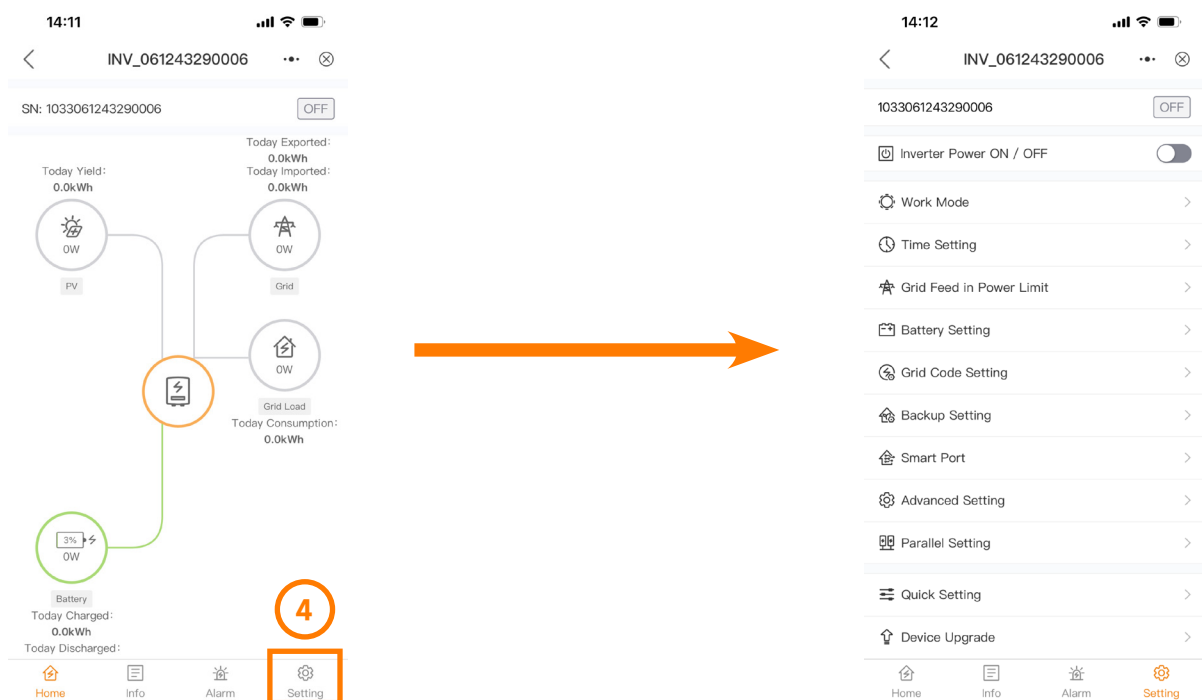


Figure 5

5. **Work Mode:** Select 'Feed in priority'

6. **Grid Feed in Power Limit:** Regulate the feed in power limit according to the site scenario.

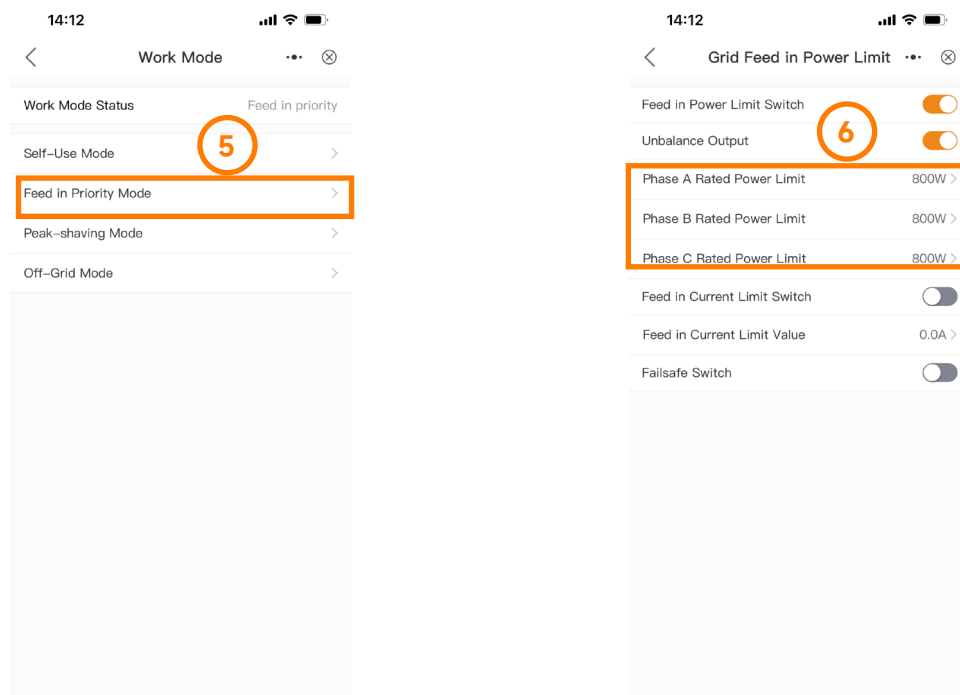


Figure 6

7. **Battery Settings:** Solis inverter can recognize SIMPO HV automatically. Certain settings should be modified.

8. **Backup Setting:** Keep default.

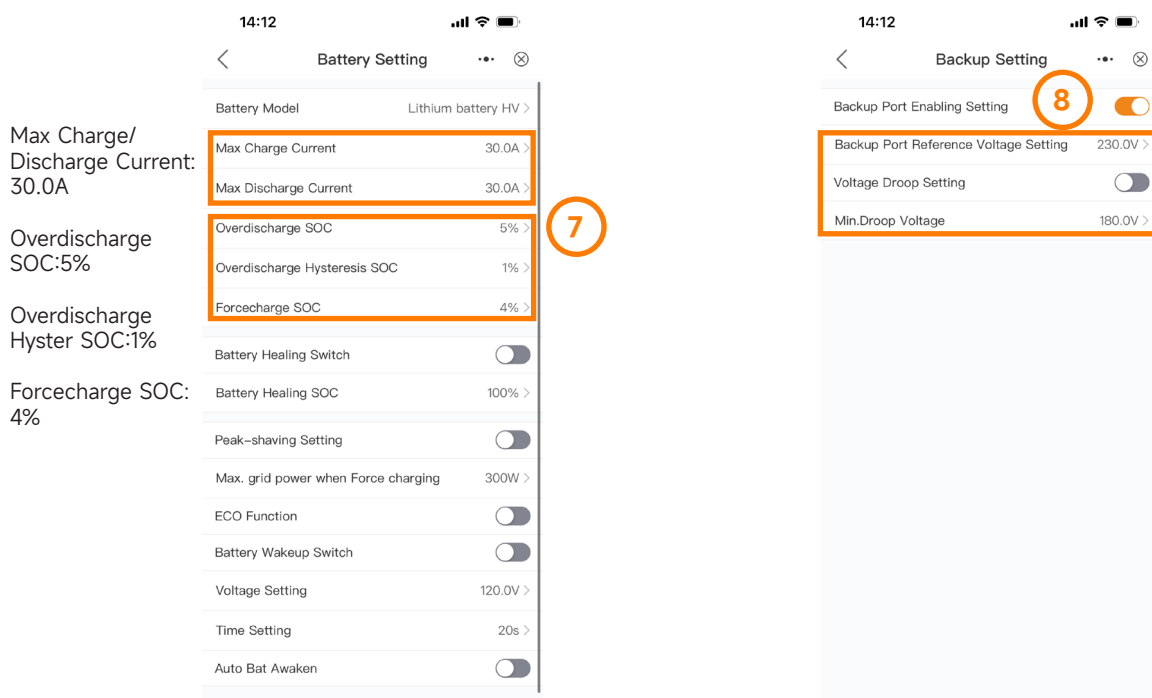


Figure 7

Goodwe Inverter

Commissioning Process

Step 1: Connect power cables and communication cable

Please refer to the **SIMPO HV Quick Start** manual for SIMPO HV power cables and communication cable connections. And follow the **Quick Installation Guide** of Goodwe inverter for power cables crimping and cables connections.

The following is an example of connection between SIMPO HV and Goodwe inverter.

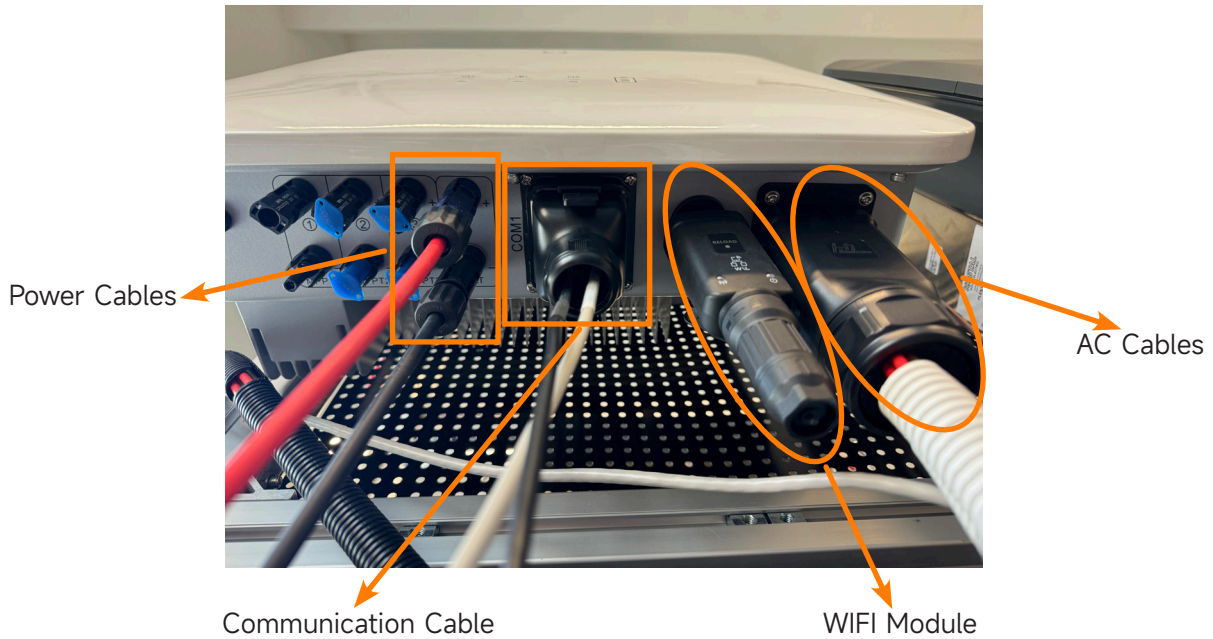


Figure 8

Step 2: System start up

1. Switch on the inverter



Figure 9

2. Turn on the DC breaker between battery and inverter (if any).
3. Turn on the Air Switch.
4. Press 'ON/OFF' to start the system.
5. Checking the function status of the HMI.
 - Only the 'Set On' LED on master is ON. Only the 'Last Unit' LED of last tower is ON. Only the 'WIFI On' on master tower is on.



Step 3: SolarGo Settings

1. Start the APP 'SolarGo', and select the device you want to set up via bluetooth or WLAN.
2. Go to **Settings — Communication Settings**.
3. Setting up according to the actual situation.

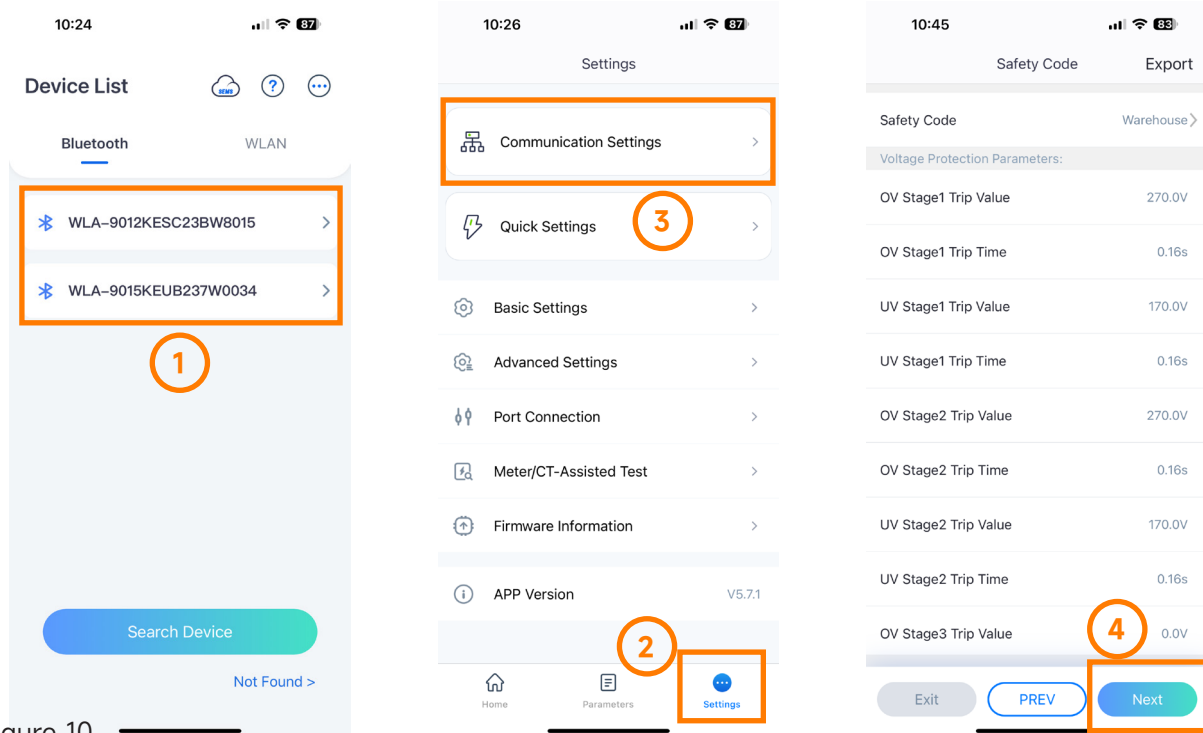


Figure 10

Please select '**Default 50A**' as the battery model at the moment. And set the '**Rated Power**' to **80%**.

When all settings are complete, check if all status are normal.

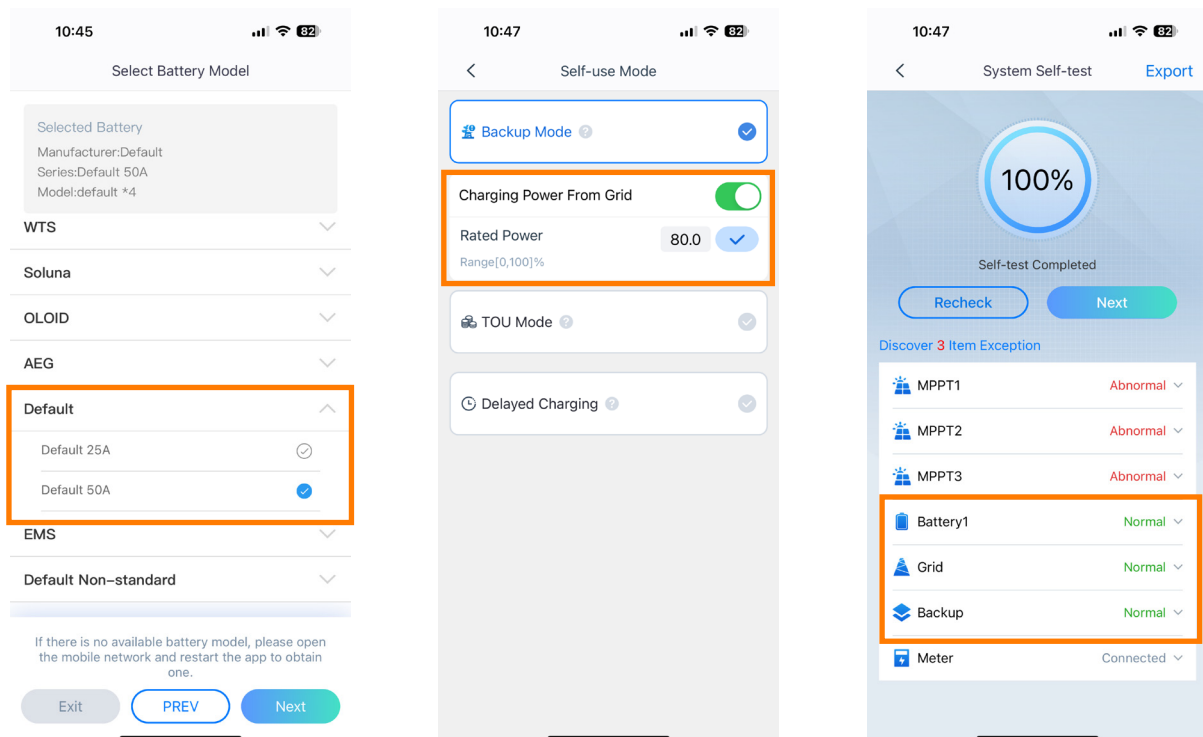


Figure 11

1. Go to **Advanced Settings — Battery Function**
2. Complete the **Limit Protection** and **Immediate Charging**.

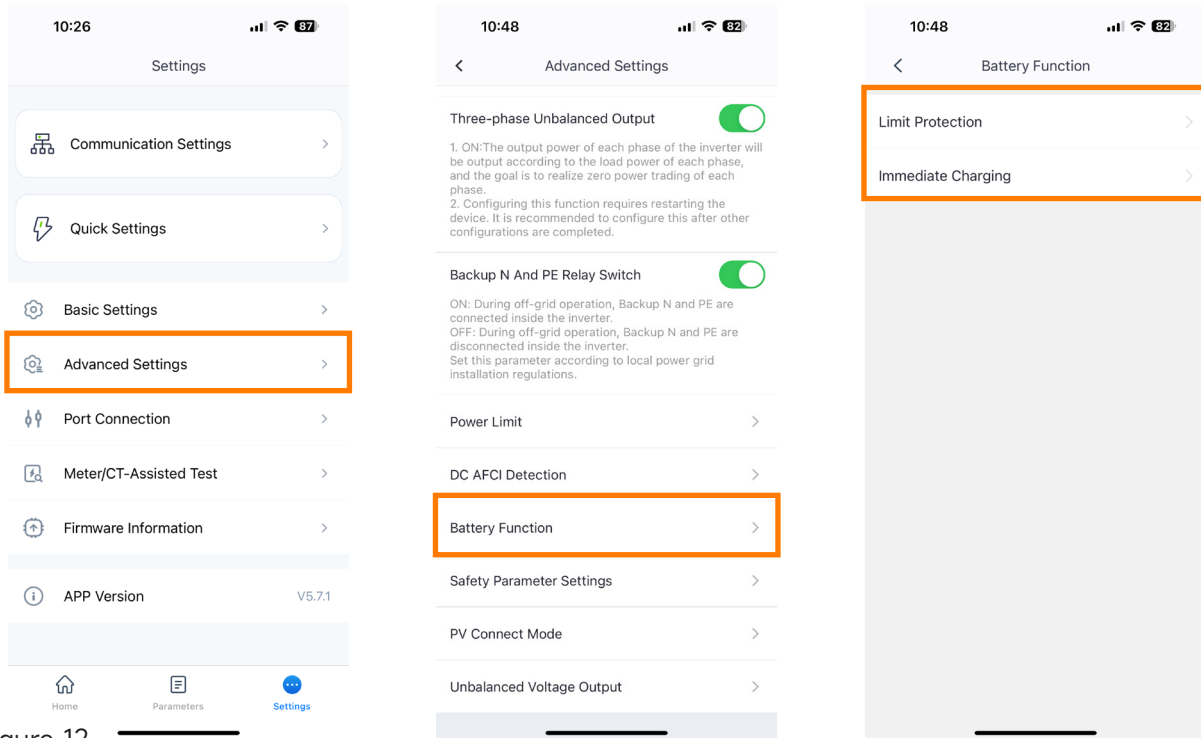
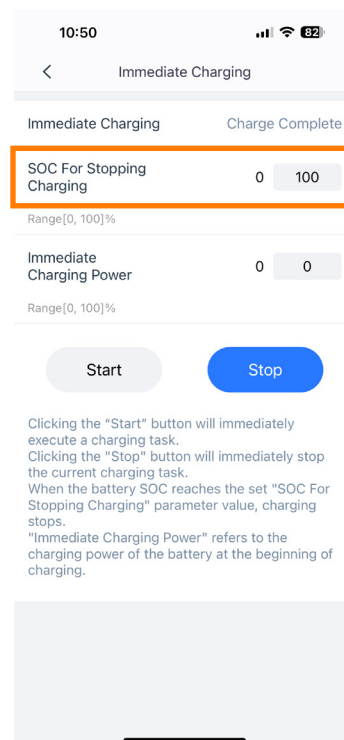
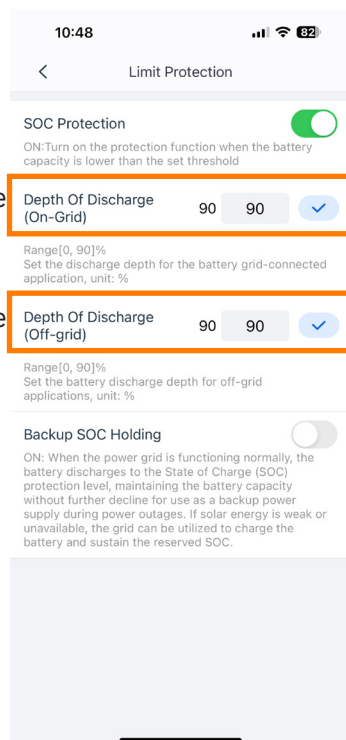


Figure 12

1. Go to **Advanced Settings — Battery Function**
2. Complete the **Limit Protection** and **Immediate Charging** settings as the following parameters to finish the commissioning.

Depth Of Discharge
(On-Grid): 90

Depth Of Discharge
(Off-Grid): 90



SOC For Stopping
Charging: 100

Figure 13

Contact Us



ZYC Energy Australia Pty Ltd



Suite 37 Ridge St North Sydney NSW 2060, Australia



+61 2 8006 1868



service@zyc-energy.com.au



ZYC Lithium Batteries S.L.



Calle Angelita Cavero 13 Oficina 4 Madrid (28027), Madrid, España



+34 6 97919475 / +49 7119987199



service@zyc.energy



ZYC Energy Company Limited



GuangKe Road 1, Pingshan, Shenzhen, P.R. China



+86 (0) 755 2839 4019



service@zyc.energy



WhatsApp: +86 19168831702



www.zyc.energy